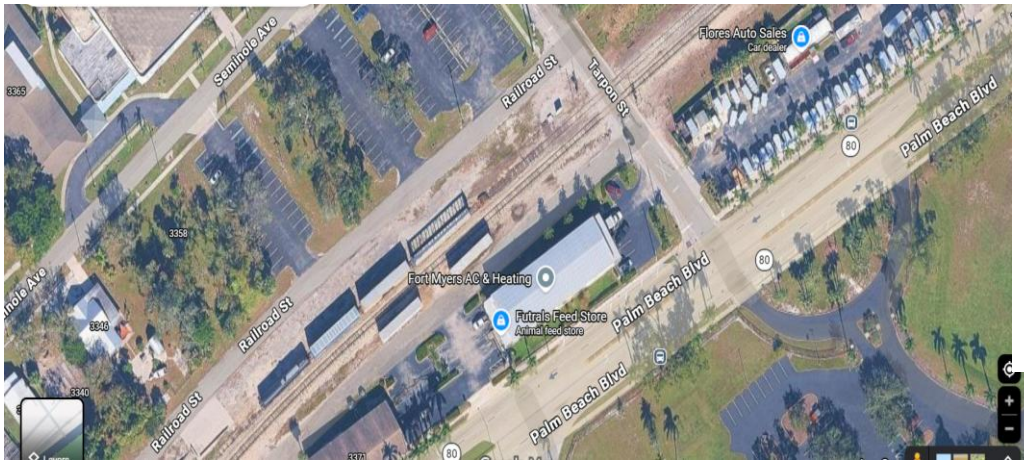


# Fort Myers, FL

## Tarpon Street and SGLR Railroad, Fort Myers, FL 33916

- ◆ Direct rail service provided by Seminole Gulf Railway
- ◆ Multiple rail cars siding already built for a Transload location
- ◆ Easy truck access to both US 41 & I-75
- ◆ Easy truck ingress and egress from site to Palm Beach Blvd
- ◆ Seminole Gulf Railway owned property
- ◆ No clearance restrictions as all sidetracks and mainline are 286k lbs. capable
- ◆ No restrictions on operating hours along with a highly flexible industry switching schedule provided



**Multiple  
Rail Car Siding**

**Zoned Industrial**

**Great Transload  
Opportunity Site**

### CONTACT

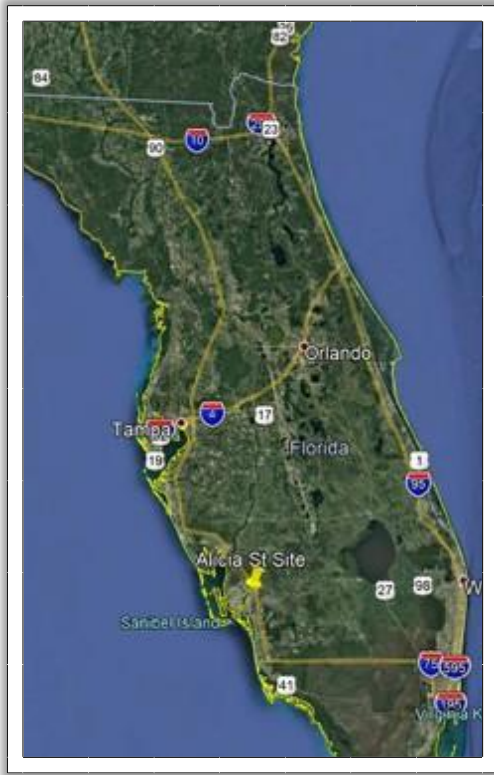
**Daniel Noyes, Senior Vice President of  
Marketing and Sales**

Phone: 239-910-0946

Email: [dnoyes@floridarail.com](mailto:dnoyes@floridarail.com)

## Road Connectivity

The property is located 2 miles East of US 41 and 4 miles west of I-75 in Fort Myers FL that provided great access to all points North or South. 60 miles direct access East via SR 80 to Lake Okeechobee.



## Seminole Gulf Railway

SGLR operates 118 miles of trackage between North Naples and Arcadia, as well as between Oneco (Bradenton) and Sarasota. SGLR now hauls much of the region's building materials, newsprint, LP gas, plastics, stone, recycled materials, steel, and other commodities. The railroad owns and manages a fleet of railcars rolling throughout North America. SGLR also helps clients with industrial development services.

In addition to providing traditional rail freight transportation, Seminole Gulf's related companies provide other vital supply chain solutions for Southwest Florida, including regional trucking and logistical services, as well as warehousing and distribution from its 1.6 million cubic feet, frozen, refrigerated food and dry goods distribution center located in North Fort Myers.

## Southwest Florida's Growing Economy

Southwest Florida continues to show heavy economic growth as the population has increased over 45% in the last 17 years. The region's population is expected to increase by another 40% over the next 45 years.

Industry diversification grew 8% at the end of 2018 and is listed in the top ten regions of industry diversified workforce. Construction has accounted for most of the industrially diverse economy as the population continues to skyrocket. Bulk commodities such as lumber, plastics, aggregates, metals, and various building materials are and will be in high demand for years to come.